

HOT SPOTS KAWASAKI VOL.1

Here are popular spots and shops in Kawasaki from a local's perspective!

Use this map to discover fun and exciting part of Kawasaki!

A



Kawasaki City Hall Sky Deck



B



Kawasaki Ukiyo-e Gallery Saito Fumio Collection



C



Tokaido Glass Craft Class <Reservation Required>



D



Tokaido Kawasaki Shuku Koryukan



E



Local Dining Spot Meiga-Yokocho



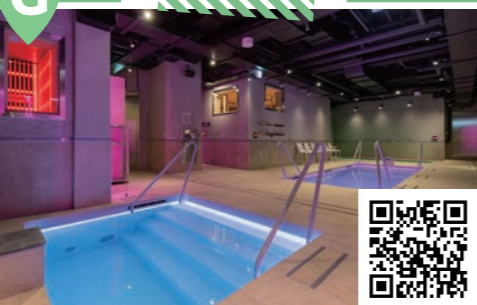
F




Spiritual Power Spot Inage Shrine



G



Brand New Sauna & Spa saunahouse




Shopping Restaurant Hotel

3 sweet



Tohteru



1 shopping



Don Quijote Picaso Ginryugai



4 sweet



Kashisho Suetiroan



2 supermarket



Kawajiya



5 craft beer



Tokaido Beer



6 craft beer



T.T. Brewery



7 takoyaki



Pepe Tako



8 hotel



Kawasaki Nikko Hotel





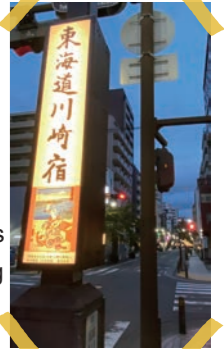
Kawasaki-Shuku Trivia

Tokaido Kawasaki-Shuku

The Kawasaki Station area is conveniently located between Tokyo and Yokohama, close to Haneda Airport. In fact, it's the area that has a long history as a prosperous post town.

In 1600, Tokugawa Ieyasu won the Battle of Sekigahara and took control of the country. The following year, he designated post stations along the Tokaido expressway and put them in charge of transporting passengers and goods between each station.

Kawasaki-Shuku was established in 1623 to reduce the workload of Shinagawa and Kanagawa-Shuku, and prospered with the ferries crossing the Tama River to Edo and Kawasaki Daishi Temple.

Kawasaki-Juku Specialty "Nara Chameshi"

Kawasaki-Shuku "Mannen-ya" prospered thanks to its popular "Nara Chameshi" (rice with Nara pickles) and "Miso soup with clams" from the Tama River.

The story "Tokaidochu Hizakurige" (a travelogue from the Edo period), Yaji and Kita ate "Nara Chameshi", made the restaurant famous nationwide.




Kawasaki Daishi Temple

Kawasaki Daishi is a popular temple with many worshippers for warding off evil spirits, both in the Edo period and today.

In the Edo period, day trips to Daishi from Edo became very popular. "Kuzu-mochi" cake, a Kawasaki specialty that passed down from the Edo period is sold at Nakamise Shopping Street in front of Kawasaki Daishi Gate. Daruma, considered a lucky charm, are also recommended as souvenirs.




Ginryugai · Ginzagai

Shopping arcade connecting La Cittadella and Kawasaki City Hall.



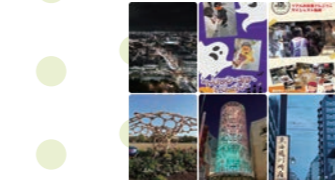

Nakamise-dori Shopping Street

Night out spot with wide variety of restaurants and bars.




Cinecitta' Shopping Street

Vibrant shopping street next to commercial complex "La Cittadella".

Tourist Association of Central Kawasaki City YouTube Channel

